

Whirlwind

By Polyglot Theatre

Presented by Melbourne Fringe & supported by Museums Victoria

Visual Story



Before *Whirlwind*



I am going to the Immigration Museum to be part of *Whirlwind* with performers from Polyglot Theatre.



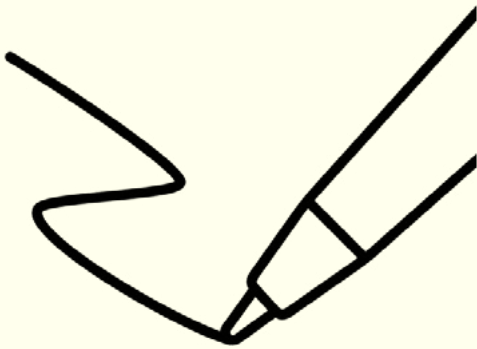
The Immigration Museum is a big cream-coloured building with lots of rooms and exhibitions.



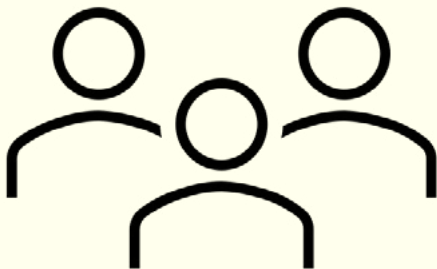
Whirlwind will take place in the Long Room. It is a big space, with tall columns, tile floors and a very high ceiling.



There will be friendly people who will let me know that I am in the right place. I can say hello if I want to.



My family and I will get our names ticked off.



Other people will be arriving, and they will be part of *Whirlwind* as well.

Some Polyglot people I might meet:



Cat



Jen



Julie



Maisy



Meg



Niamh



Sasha



Tirese



Zak

During *Whirlwind*



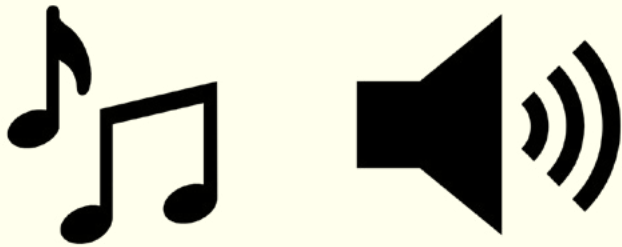
There will be lots of electric fans in different sizes.



The fans will make noise, and move air around.



There will be lots of paper and big pieces of fabric.



There will be music and sounds playing from speakers.



Performers will create and play around the fans.



I can explore what happens with the paper or fabric in the moving air...



... or move my body in the space.



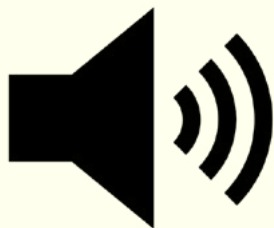
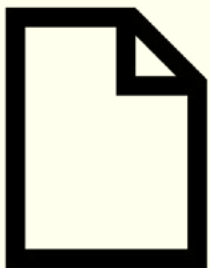
I choose how I create and play in *Whirlwind*.



I can put on my ear defenders and/or goggles whenever I need to.



There will be a Break Out Space next to the performance area.

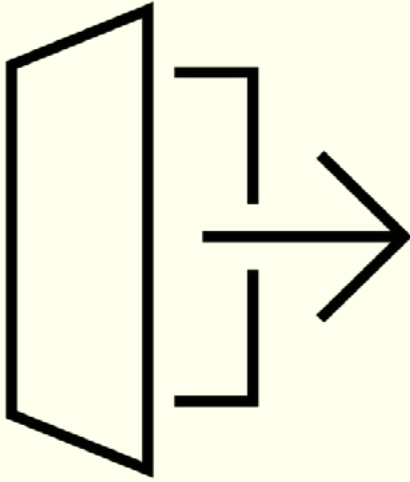


It will have mats and chairs for resting. I can play with paper and tape there too. I will still hear sounds from the performance.



If I need a break, I can go to the Quiet Space on the ground floor. Friendly people will let me know how to get there.

After *Whirlwind*



When *Whirlwind* is finished, I will leave the Long Room.



After my session, I can explore the Immigration Museum with my family.

My space to draw

About Polyglot Theatre

Polyglot Theatre is a world-renowned contemporary theatre company based in Melbourne/Naarm, making exceptional arts experiences for children and families. Our unique brand of theatre encompasses a wide variety of forms and is shared with audiences everywhere, from the world's most prestigious stages to the football grounds of regional Australia.

Polyglot's artistic and philosophical approach of child-centred practice has earned us a strong reputation at home and abroad as a leader in the Theatre for Young Audiences sector, celebrated for creating distinctive, participatory works that are playful and conceptually rigorous. Access is central to our work at Polyglot, driven by the right of all children to experience growth and resilience through creative play.

polyglot.org.au

Polyglot Theatre is assisted by the Australian Government through Creative Australia, its principal arts funding and advisory body, and the Victorian Government through Creative Victoria.



Whirlwind was developed with support from Melbourne Fringe and The Robert Salzer Foundation. The premiere season has been Fringe Funded, as part of XS, with thanks to Daniel Besen, and Rupert Myer AO and Annabel Myer, and supported by Museums Victoria. It has been made more accessible with support from Access Fringe.



About Melbourne Fringe

The Melbourne Fringe Festival is an annual celebration of independent arts in Melbourne, known for its open-access approach that welcomes a wide range of artists and art forms. It's a 20-day festival running from September 30 to October 19, 2025, featuring over 500 events that showcase the work of emerging and established artists. The festival is a platform for diverse voices, including First Nations artists, d/Deaf and disabled creatives, and queer storytellers.

melbournefringe.com.au

About Museums Victoria

Through our rich collections, exhibitions, events, education programs and digital content, we explore themes of migration, identity, citizenship and community through multiple perspectives. We engage with communities and creative practitioners to produce powerful opportunities for social interaction, empathy and debate.

The Immigration Museum opened in 1998 within Old Customs House. Located on the bank of Birrarung (Yarra River), this former administrative centre of immigration and trade is a site of great historical significance and complexity.

We welcome you to visit to connect with us, and each other.

museumsvictoria.com.au