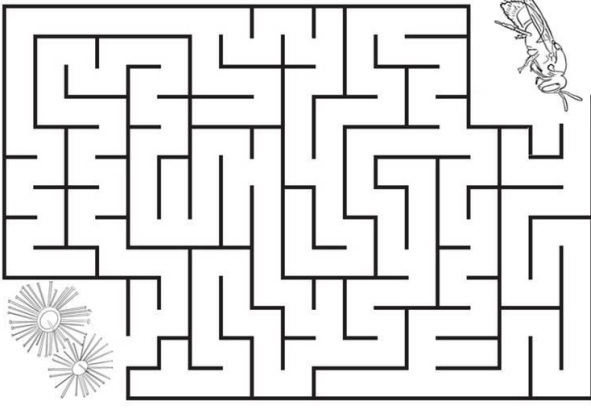


What do you call a wasp? A wanna-bee



Help the Masked Bee find its food – the eucalyptus flower

Bee-Mazing Maze

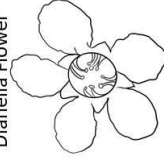
Make a Bee - Line

Draw a line between the bee and its preferred flower.

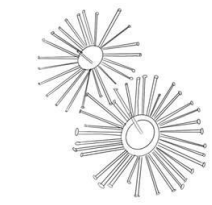


Masked Bee

Dianella Flower

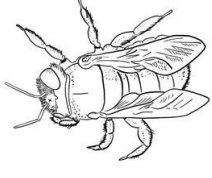


Tea Tree Flower



Metallic Green Carpenter Bee

Eucalyptus Flower



What do you get if you cross a doorbell with a bee? A humdinger.

Why do bees have sticky hair? Because they use honey combs.

DATE	NUMBER OF BEES	FLOWER VISITED

Buzzy - Bee - Entomologist

What can you see in your backyard?

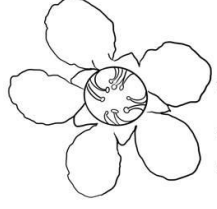
Metallic Green Carpenter Bee

Colour: Metallic green body with dark legs and wings.



Now only found north of Sydney, NSW, and possibly still on Kangaroo Island in South Australia. Up to 19 mm long.

They prefer the Tea Tree Flower.



Tea Tree Flower

What's better than a talking wasp? A spelling bee.

Thanks to Dr Ken Walker at Museums Victoria (Senior Curator of Entomology)



Other websites:-

AussieBeeaussiebee.com.au

[Atlas of Living Australia.ala.org.au](http://AtlasofLivingAustralia.ala.org.au)

Resources:

Find out more about the Metallic Green Carpenter Bee at museums.victoria.com.au and search for "Under fire". Find out even more about bees at: Museumsvictoria.com.au (Search for Bees)

Bees look for pollen and nectar when the sun is out. They also like to have a place to drink water.

Note: The best time to find bees.

Do a bee count: Find the table inside this booklet to keep a count of bees in your backyard. Look for the smaller bees (not the European honey bee).

Your buzzy backyard

Bees are Entomologists (Bug Scientists)

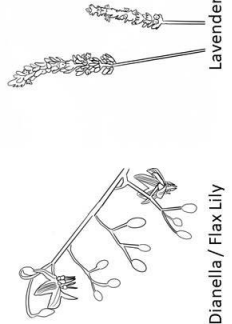
To help our bees try planting eucalyptus, tea-tree, bottlebrush, dianella, lavender, mint, basil and lots of colourful flowers. (Herbs are great for small spaces!)

Blue Banded Bee

Colour: Golden brown to orange brown and then blue bands across black on rest of body



These bees visit Dianella/flax lily, mainly to buzz pollinate the flowers. They also like lavender and many other blue flowers. They are found Australia wide but not Tasmania. 8 – 13 mm long.



Dianella / Flax Lily

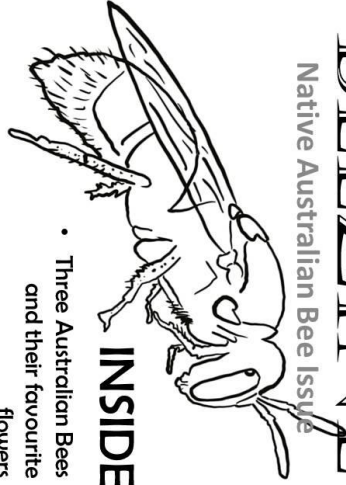
Lavender

Why did the bee hum? It didn't know the words.



Masked Bee actual size

- Colouring Fun & Maze
- Matching Game
- What you can do to help our bees.
- Bee-grade jokes



BEEZINE
Native Australian Bee Issue

Did you know there are almost 1700 species of native Australian bees?

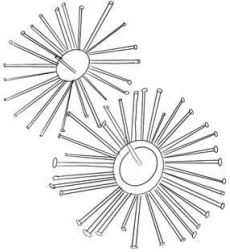
Not a real bee
PRICE FREE-BEE

Masked Bee

Colour: Black with yellow spots on its body.



They have short tongues which means they collect pollen from shallow flowers such as eucalyptus blossoms. Up to 9mm long, these bees can be found Australia wide.



Eucalyptus flower

What do bees chew? Bumble gum